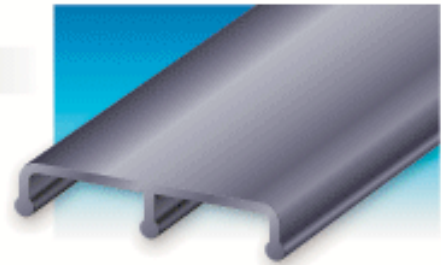


WIL-KEY CONCRETE LOCK (WILLOCK)

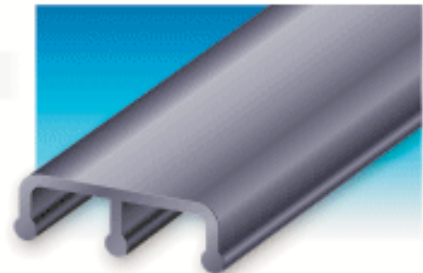
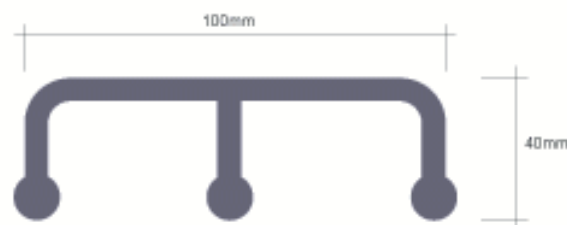
HDPE EXTRUDED PROFILE LOCK

WILLOCK PROFILE WK-EL01



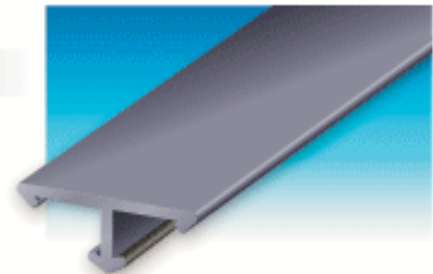
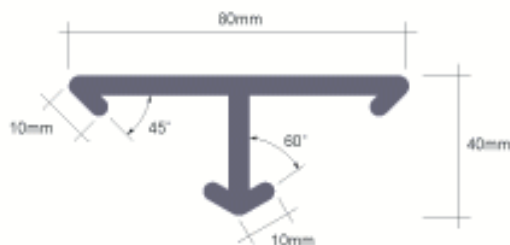
PROFILE WK-EL01

WILLOCK PROFILE WK-EL02



PROFILE WK-EL02

WILLOCK PROFILE WK-TL01



PROFILE WK-TL01

SPECIFICATIONS

Material	:	High Density Polyethylene (HDPE)
Density	:	0.94 gm/cc
Melt Flow Index	:	1.00
Carbon Black Content	:	2 to 3%
Standard Length	:	3m or 6m

ALSO AVAILABLE:

CUSTOM MADE PROFILE
CUSTOM LENGTH
PREFABRICA ITEMS
(TEE, CROSS, ELBOW ETC)



WIL-KEY INTERNATIONAL SDN. BHD. (526763-X)

54A, JALAN USJ 10/1B, 47620 UEP SUBANG JAYA, SELANGOR, MALAYSIA.
Tel: 603-5631 1612 Fax: 603-5631 1812 Email: info@wil-key.com.my

www.wil-key.com.my